

STORMY SERIES

OPEN STAND AND AGITATOR, STRAINER AND AGITATOR

Rugged, reliable and cost effective, the Stormy series pumps come complete with patented high chrome impellers, agitators, and wear plates to withstand tough slurry transportation. STORMY pumps are designed with two different types of pump stands, the open stand and the strainer. Our slurry pumps serve a wide range of slurry transport applications like mining, quarrying, construction sites, and other demanding industries.

FEATURES

1 Watertight Cable Entry

The cable entry employs an anti-wicking block where each conductor is stripped and encapsulated in epoxy. This feature effectively prevents water from penetrating the motor chamber when the cable end is submerged or the cable sheath is damaged.

2 Top Discharge and Side Flow Design

Designed to cool the motor with pumped water even at low water level, this feature forms the cylindrical and slim shape of the pump and enables the pump to be installed in confined spaces.

3 Motor Protector

The motor incorporates a circle thermal protector which protects against overheating and dry-run.

4 Submersible 4-Pole Motor

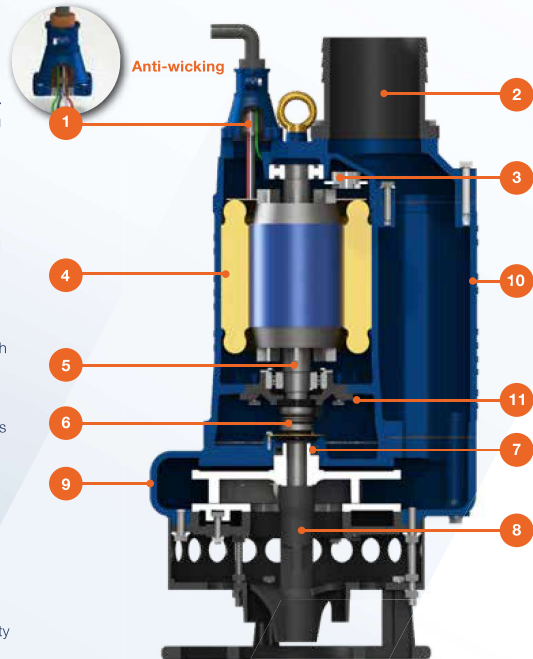
Air filled motor, housed in a watertight casing, conforms to Class F insulation. The 4-pole motor helps reducing impeller wears.

5 C3 Ball Bearings and Hardened SS Shaft

High quality of C3 ball bearings and the well-balanced, hardened stainless steel shaft enhance stability during continuous pumping operations.

6 EagleBurgmann® Double Mechanical Seals

Located in the oil chamber, the device is made of quality materials with highly wear-resistant silicon carbide in lower side that provides extra protection against leakage and dry-run.



7 Extra Protection for Mechanical Seals and Shaft

Lip seals and shaft sleeves are utilized for additional protection against wear.

8 High Chrome Steel Impeller, Agitator, and Wear plate

PRORIL patent formula, ACrS Tech is applied to all high chrome steel components, including impellers, agitators, and wear plates. This technology increases wear resistance to particle abrasion.

9 Hardened Pump Volute

The pump volute is made from hardened cast ductile iron. This technology enhances the hardness and wear life of the pump casing.

10 Rugged Cast Iron Construction

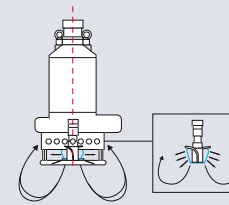
The whole cast iron pump features a simple, robust structure that provides durability and impact resistance to rough conditions.

11 Food Grade Lubricant

PRORIL adopts eco-friendly lubricant to minimize environmental impacts.

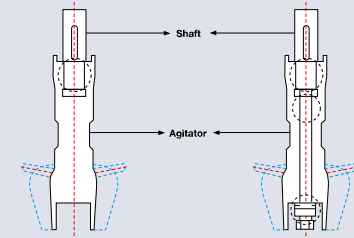


How the agitator works



The rigid agitator delivers kinetic energy (energy of motion) to stir solids surrounding the pump intake, re-suspending them into a fluid state for easy pumping.

Agitator fastening



Conventional:

The agitator is simply attached onto the end of the pump shaft. As the agitator is only fastened at a single point, the agitator can loosen itself or come off during use.

PRORIL Pump's design:

By using a prolonged pump shaft, the agitator is fastened at three separate points, ensuring that the agitator cannot loosen itself.



High Chrome Steel Impeller, Agitator and Wear plate

Designed for high wear resistance and superb corrosion resistance, ACrS Tech is applied to all our STORMY series impellers, agitators and wear plates to tackle tough challenging applications. The use of ACrS Tech chromium steel material significantly reduces operational costs.



Heavy Duty PUR Cable

As rugged as our pumps. Provides an ultra solid solution to the weak spot of every submersible pump. Extra safety on the construction site and maximum visibility.



Watertight Cable Entry

The cable entry employs an anti-wicking block where each conductor is stripped and encapsulated in epoxy. This feature effectively prevents water from penetrating the motor chamber when the cable end is submerged or the cable sheath is damaged.

STORMY | 337 437

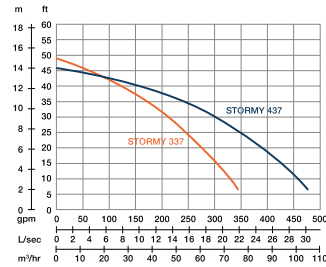


Ⓟ

Ⓢ

STORMY	337	437
Outlet	3" (BSP)	4" (BSP)
Rated Output	3.7 kW	3.7 kW
Shaft Speed	1450 rpm	1450 rpm
Solid Passage	25 mm	25 mm
Height Ⓟ	762 mm	783 mm
Height Ⓢ	793 mm	814 mm
Diameter Ⓟ	Ø 385 mm	Ø 385 mm
Diameter Ⓢ	Ø 382 mm	Ø 382 mm
Weight Ⓟ	110 kg	110 kg
Weight Ⓢ	115 kg	115 kg

Ⓟ = open stand Ⓢ = strainer



STORMY | 355 455

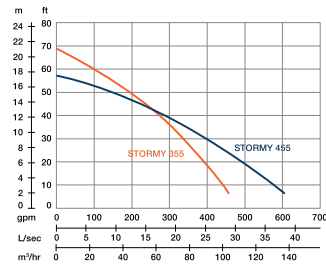


Ⓟ

Ⓢ

STORMY	355	455
Outlet	3" (BSP)	4" (BSP)
Rated Output	5.5 kW	5.5 kW
Shaft Speed	1450 rpm	1450 rpm
Solid Passage	25 mm	25 mm
Height Ⓟ	806 mm	826 mm
Height Ⓢ	806 mm	826 mm
Diameter Ⓟ	Ø 420 mm	Ø 420 mm
Diameter Ⓢ	Ø 412 mm	Ø 412 mm
Weight Ⓟ	123 kg	124 kg
Weight Ⓢ	131 kg	132 kg

Ⓟ = open stand Ⓢ = strainer



STORMY | 475

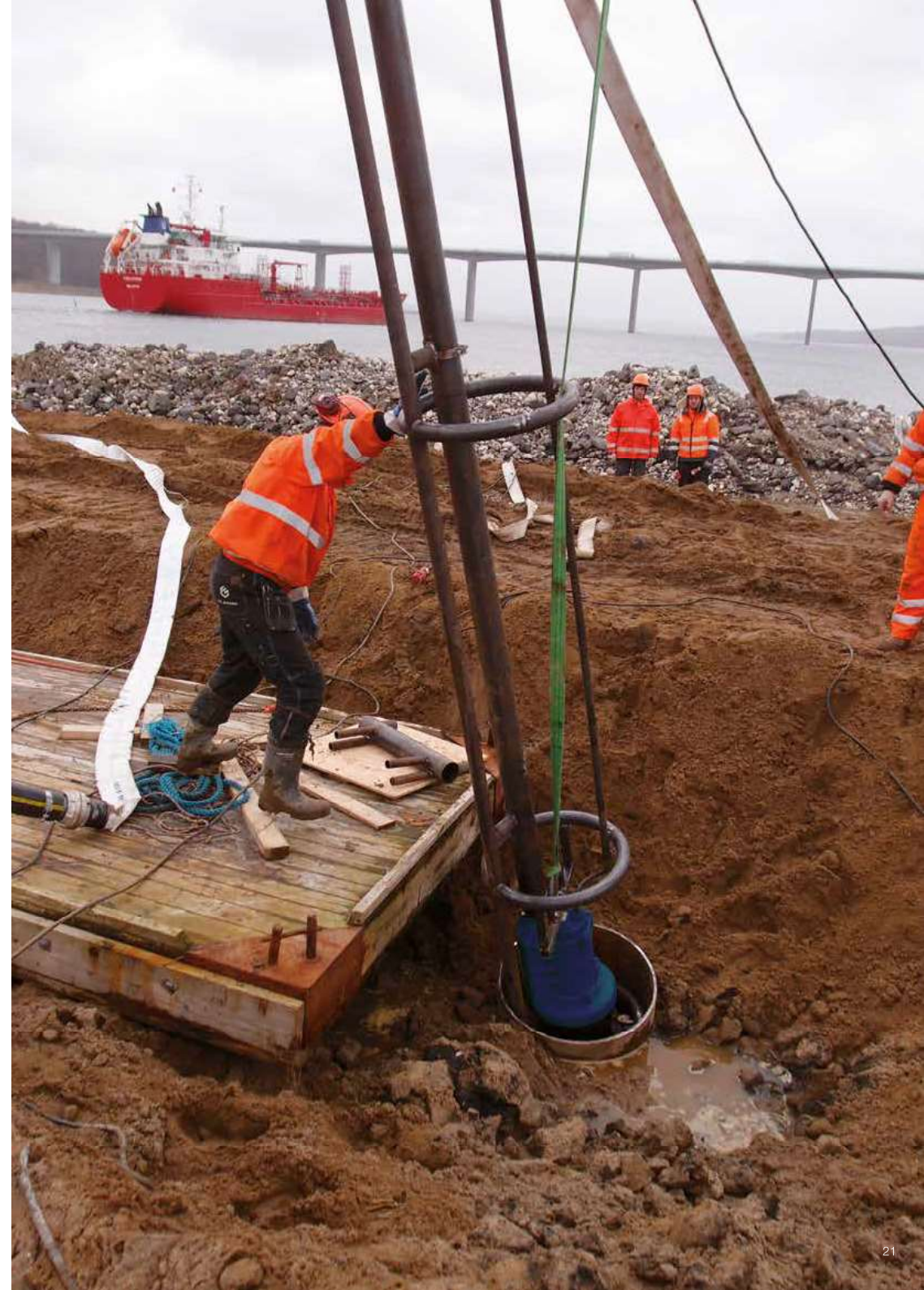
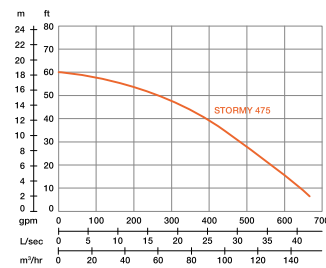


Ⓟ

Ⓢ

STORMY	475
Outlet	4" (BSP)
Rated Output	7.5 kW
Shaft Speed	1450 rpm
Solid Passage	25 mm
Height Ⓟ	826 mm
Height Ⓢ	826 mm
Diameter Ⓟ	Ø 420 mm
Diameter Ⓢ	Ø 412 mm
Weight Ⓟ	124 kg
Weight Ⓢ	132 kg

Ⓟ = open stand Ⓢ = strainer



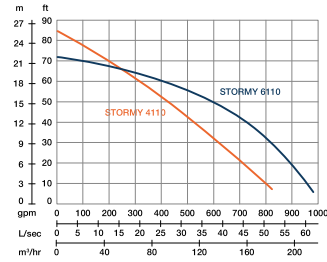
STORMY 4110 6110



(P) (S)

STORMY	4110	6110
Outlet	4" (BSP)	6" (BSP)
Rated Output	11 kW	11 kW
Shaft Speed	1450 rpm	1450 rpm
Solid Passage	25 mm	35 mm
Height (P)	901 mm	913 mm
Height (S)	910 mm	922 mm
Diameter (P)	Ø 479 mm	Ø 479 mm
Diameter (S)	Ø 479 mm	Ø 479 mm
Weight (P)	191 kg	192 kg
Weight (S)	199 kg	200 kg

(P) = open stand (S) = strainer



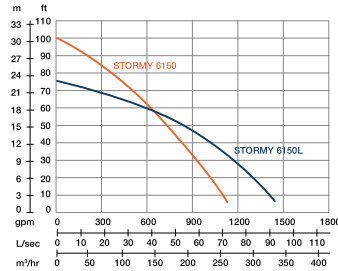
STORMY 6150 6150L



(P) (S)

STORMY	6150	6150L
Outlet	6" (BSP)	6" (BSP)
Rated Output	15 kW	15 kW
Shaft Speed	1450 rpm	1450 rpm
Solid Passage	35 mm	35 mm
Height (P)	913 mm	913 mm
Height (S)	922 mm	922 mm
Diameter (P)	Ø 479 mm	Ø 479 mm
Diameter (S)	Ø 479 mm	Ø 479 mm
Weight (P)	201 kg	201 kg
Weight (S)	208 kg	208 kg

(P) = open stand (S) = strainer



STORMY 6220 8220



(P) (S)

STORMY	6220	8220
Outlet	6" (BSP)	8" (BSP)
Rated Output	22 kW	22 kW
Shaft Speed	1450 rpm	1450 rpm
Solid Passage	30 mm	40 mm
Height (P)	1204 mm	1166 mm
Height (S)	1210 mm	1172 mm
Diameter (P)	Ø 592 mm	Ø 592 mm
Diameter (S)	Ø 592 mm	Ø 592 mm
Weight (P)	345 kg	355 kg
Weight (S)	357 kg	367 kg

(P) = open stand (S) = strainer

