

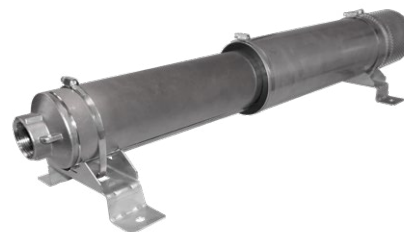
COOLING SLEEVE FOR SUBMERSIBLE MOTOR PUMPS



COOLING SLEEVE FOR SUBMERSIBLE MOTOR PUMPS

The heat loss generated by the submersible motor must be dissipated to the pumped medium by means of convection. If the minimum cooling speed along the submersible motor cannot be guaranteed, it is mandatory to install a cooling jacket in order to generate sufficient cooling.

To provide cooling, the pump-motor unit is supplemented by a cooling sleeve. This separate „sheet metal jacket“ is sealed above the pump inlet. The pumped medium is thus sucked in from below and directed past the motor in order to dissipate the generated motor heat loss (convection).



Appropriate brackets and inlet strainers are available for horizontal installation in an open body of water, e.g. a tank, a lake or a flowing body of water.

COMPONENTS COOLING SLEEVE KIT

- 1 Cooling sleeve tube (Stainless steel)
- 2 Pump sealing ring (EPDM) with drinking water approval
- 3 Motor spacer
- 4 Pipe clamps
- 5 Filter strainer (accessories)
- 6 Console (accessory for horizontal mounting)



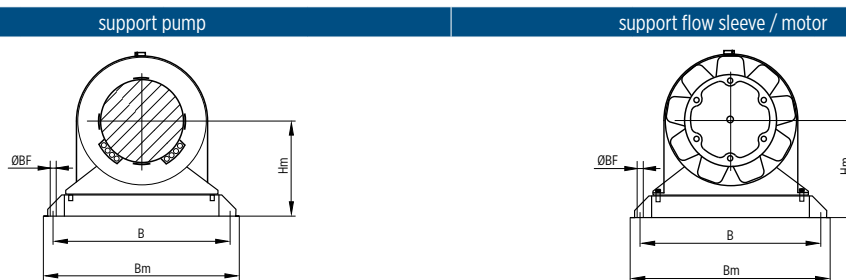
COOLING SLEEVE FOR 4" SUBMERSIBLE MOTOR PUMPS

FE pump type	FE motors		dimensions [mm]	model no. cooling sleeve 304SS**	Accessories				
	type*	P _N [kW]			model no. strainer	model no. support brackets (for horizontal installation)			
4"	VS 1, VS 2, VS 3 VS 4, VS 6, VS 7 VS 8, VS 10	4" CT	1- / bis 0.75	Ø 115 x 400	309 005 161 [Ø 115 mm x 117 mm]	309 005 601 (Set = 2 pcs.)			
			3- / bis 1.5	Ø 115 x 500			309 005 102		
			1- / 1.1 - 1.5	Ø 115 x 800				309 005 103	
			3- / 2.2 - 3.0	Ø 115 x 1000					309 005 104
			1- / 2.2	Ø 145 x 625					
3- / 3.7 - 5.5	Ø 145 x 800	309 005 106							
3- / 7.5	Ø 145 x 1000		309 005 107						
VS 15	4" CT	1- / 2.2	Ø 145 x 625	309 005 261 [Ø 145 mm x 158 mm]	309 005 603 (Set = 2 pcs.)				
3- / 2.2 - 3.0	Ø 145 x 800	309 005 106							
3- / 3.7 - 5.5	Ø 145 x 1000	309 005 107							

* CT: encapsulated motors, RW: rewindable motors

** 316SS version: "N" added to model no.; 904L version: "R" added to model no. (available on request)

DIMENSIONS SUPPORT BRACKETS 4"



Support brackets model no.	Middle height Hm [mm]	Support pump			Support flow sleeve / motor		
		B [mm]	Bm [mm]	Ø BF [mm]	B [mm]	Bm [mm]	Ø BF [mm]
309 005 601	100	185	220	11	185	220	11
309 005 602	100	235	275	11	235	275	11
309 005 603	115	265	315	11	265	315	11

COOLING SLEEVE FOR 6" SUBMERSIBLE MOTOR PUMPS

FE pump type	FE motors		dimensions [mm]	model no. cooling sleeve 304SS**	Accessories				
	type*	P _N [kW]			model no. strainer	model no. support brackets (for horizontal installation)			
6"	VS 14, VS 19, VS 30	4" CT	3- / 2.2	Ø 160 x 625	309 005 301	309 005 361 [Ø 160 mm x 158 mm]	309 005 611 (Set = 2 pcs.)		
		4" CT	3- / 3.7 - 5.5	Ø 160 x 800	309 005 302				
		4" CT	3- / 7.5	Ø 160 x 1000	309 005 303				
		6" CT	4.0	Ø 180 x 625	309 005 304	309 005 461 [Ø 180 mm x 192 mm]	309 005 612 (Set = 2 pcs.)		
		6" CT	5.5 - 11	Ø 180 x 800	309 005 305				
		6" RW	4 - 9.3	Ø 180 x 800	309 005 306				
		6" CT	15 - 22	Ø 180 x 1000	309 005 307				
		6" RW	11 - 18.5	Ø 180 x 1000	309 005 308				
		6" CT	30	Ø 180 x 1250	309 005 309				
		6" RW	22 - 30	Ø 180 x 1250	309 005 310				
		6" CT	37	Ø 180 x 1500	309 005 311				
		6" RW	37	Ø 180 x 1500	309 005 312				
		6" CT	45	Ø 180 x 1700	309 005 313				
6"	VS 46 VS 65	4" CT	3.0 - 4	Ø 180 x 800	309 005 314	309 005 461 [Ø 180 mm x 192 mm]	309 005 612 (Set = 2 pcs.)		
		4" CT	5.5 - 7.5	Ø 180 x 1000	309 005 315				
		6" CT	4 - 11	Ø 200 x 800	309 005 316	309 005 471 [Ø 200 mm x 192 mm]	309 005 622 (Set = 2 pcs.)		
		6" RW	4 - 7.5	Ø 200 x 800	309 005 317				
		6" CT	15 - 22	Ø 200 x 1000	309 005 318				
		6" RW	9.3 - 18.5	Ø 200 x 1000	309 005 319				
		6" CT	30	Ø 200 x 1250	309 005 320				
		6" RW	22 - 26	Ø 200 x 1250	309 005 321				
		6" CT	37 - 45	Ø 200 x 1700	309 005 322				
		6" RW	30 - 37	Ø 200 x 1500	309 005 323				
		8" CT	55	Ø 254 x 1500	309 005 324			309 005 481 [Ø 256 mm x 325 mm]	309 005 623 (Set = 3 pcs.)
		8" RW	45 - 55						

* CT: encapsulated motors, RW: rewindable motors

** 316SS version: "N" added to model no.; 904L version: "R" added to model no. (available on request)

DIMENSIONS SUPPORT BRACKETS 6"



Support brackets model no.	Middle height	Support pump			Support flow sleeve / motor		
	Hm [mm]	B [mm]	Bm [mm]	Ø BF [mm]	B [mm]	Bm [mm]	Ø BF [mm]
309 005 611	125	280	330	11	280	330	11
309 005 612	140	260	310	11	300	350	11
309 005 613	140	260	310	11	300	350	11
309 005 622	150	320	370	11	320	370	11
309 005 623	150	320	370	11	320	370	11
309 005 624	200	280	330	15	380	430	15

COOLING SLEEVE FOR 8" SUBMERSIBLE MOTOR PUMPS

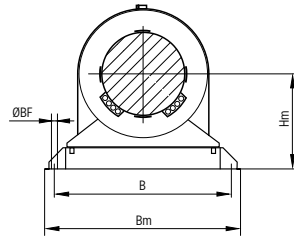
FE pump type		FE motors		dimensions [mm]	model no. cooling sleeve 304SS**	Accessories	
		type*	P _N [kW]			model no. strainer	model no. support brackets (for horizontal installation)
8"	VS 78	6" CT	7.5 - 18.5	Ø 225 x 1000	309 005 501	309 005 491 [Ø 225 mm x 240 mm]	309 005 631 (Set = 2 pcs.)
		6" RW	7.5 - 15	Ø 225 x 1000	309 005 502		
		6" CT	22 - 30	Ø 225 x 1250	309 005 503		
		6" RW	18.5 - 26	Ø 225 x 1250	309 005 504		
		6" CT	37	Ø 225 x 1500	309 005 505		
		6" RW	30 - 37	Ø 225 x 1500	309 005 506		
		8" CT	45	Ø 254 x 1500	309 005 507	309 005 481 [Ø 256 mm x 325 mm]	309 005 633 (Set = 2 pcs.)
		8" RW	30 - 37	Ø 254 x 1500	309 005 508		
		8" CT	55	Ø 254 x 1500	309 005 509		
		8" RW	45 - 55				
		8" CT	75	Ø 254 x 1700	309 005 510		
		8" RW	60 - 83				
		8" CT	93	Ø 254 x 2000	309 005 511		
		8" RW	93				
8"	VS 97	6" CT	7.5 - 18.5	Ø 254 x 1000	309 005 512	309 005 481 [Ø 256 mm x 325 mm]	309 005 633 (Set = 2 pcs.)
		6" RW	9.3 - 13	Ø 254 x 1000	309 005 513		
		6" CT	22 - 30	Ø 254 x 1250	309 005 514		
		6" RW	18.5 - 26	Ø 254 x 1250	309 005 515		
		6" CT	37	Ø 254 x 1700	309 005 516		
		6" RW	30 - 37	Ø 254 x 1500	309 005 517		
		8" CT	45	Ø 285 x 1250	309 005 518	309 005 526 [Ø 285 mm x 325 mm]	309 005 637 (Set = 2 pcs.)
		8" RW	30 - 37	Ø 285 x 1250	309 005 519		
		8" CT	55	Ø 285 x 1500	309 005 520		
		8" RW	45 - 55				
		8" CT	75	Ø 285 x 1700	309 005 521		
		8" RW	60 - 83				
		8" CT	93	Ø 285 x 2000	309 005 522		
		8" RW	93				
8"	VSC 114 VSC 132 VSC 156	6" CT	7.5 - 9.3	Ø 254 x 800	309 008 002	309 005 481 [Ø 256 mm x 325 mm]	309 005 640 (Set = 2 pcs.)
		6" CT	11 - 22	Ø 254 x 1000	309 008 001		
		6" CT	30	Ø 254 x 1250	309 008 003		
		6" CT	37 - 45	Ø 254 x 1800	309 008 004		
		6" RW	7.5 - 9.3	Ø 254 x 950	309 008 005		
		6" RW	11 - 18.5	Ø 254 x 1100	309 008 006		
		6" RW	22 - 26	Ø 254 x 1250	309 008 007		
		6" RW	30 - 37	Ø 254 x 1500	309 008 008		
		8" CT	55	Ø 285 x 1500	309 008 009		
		8" RW	45 - 55	Ø 285 x 1500	309 008 010		
		8" CT	75	Ø 285 x 1650			
		8" RW	60 - 75	Ø 285 x 1650	309 008 011		
		8" RW	83 - 93	Ø 285 x 1850			
		8" CT	93	Ø 285 x 2000	309 008 012	309 005 526 [Ø 285 mm x 325 mm]	309 005 642 (Set = 3 pcs.)
		8" CT	110	Ø 285 x 2200	309 008 013		
		8" CT	130	Ø 285 x 2400	309 008 014		
		8" CT	150	Ø 285 x 2600	309 008 015		
		10" RW	110 - 130	Ø 330 x 1750	309 008 016		
		10" RW	150 - 185	Ø 330 x 2000	309 008 017		
				309 005 523 [Ø 330 mm x 385 mm]	309 005 643 (Set = 3 pcs.)		

* CT: encapsulated motors, RW: rewindable motors

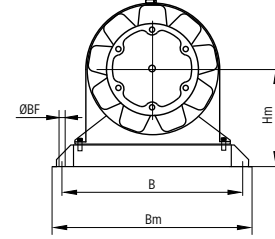
** 316SS version: "N" added to model no.; 904L version: "R" added to model no. (available on request)

DIMENSIONS SUPPORT BRACKETS 8"

support pump



support flow sleeve / motor



Support brackets model no.	Middle height	Support pump			Support flow sleeve / motor		
	Hm [mm]	B [mm]	Bm [mm]	Ø BF [mm]	B [mm]	Bm [mm]	Ø BF [mm]
309 005 631	200	320	370	15	360	410	15
309 005 632	200	320	370	15	360	410	15
309 005 633	200	320	370	15	380	430	15
309 005 634	200	320	370	15	380	430	15
309 005 637	225	320	370	15	410	460	15
309 005 638	225	320	370	15	410	460	15
309 005 640	200	320	370	15	380	430	15
309 005 641	200	320	370	15	380	430	15
309 005 642	225	320	370	15	410	460	15
309 005 643	250	320	370	15	450	500	15

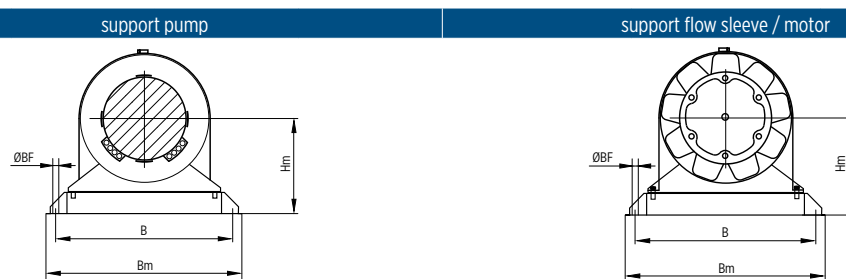
COOLING SLEEVE FOR 10" SUBMERSIBLE MOTOR PUMPS

FE pump type	FE motors		dimensions [mm]	model no. cooling sleeve 304SS**	Accessories		
	type*	P _N [kW]			model no. strainer	model no. support brackets (for horizontal installation)	
10"	VSC 204 VSC 264 VSC 304	8" CT	37	Ø 330 x 1250	309 008 018	309 005 523 [Ø 330 mm x 385 mm]	309 005 644 (Set = 2 pcs.)
		8" CT	55	Ø 330 x 1500	309 008 019		309 005 645 (Set = 3 pcs.)
		8" RW	37 - 67				
		8" CT	75	Ø 330 x 1700	309 008 020		
		8" RW	75				
		8" RW	83 - 93	Ø 330 x 1850	309 008 021		
		8" CT	93	Ø 330 x 2000	309 008 022		
		8" CT	110	Ø 330 x 2200	309 008 023		
		8" CT	130	Ø 330 x 2400	309 008 024		
		8" CT	150	Ø 330 x 2600	309 008 025		
	10" RW	110 - 130	Ø 380 x 1750	309 008 026			
	10" RW	150 - 185	Ø 380 x 2000	309 008 027			
	VSC 204	12" RW	220 - 250	Ø 380 x 2100	309 008 028	309 005 524 [Ø 330 mm x 385 mm]	309 005 646 (Set = 3 pcs.)
VSC 264	12" RW	300 - 350	Ø 380 x 2300	309 008 029			
VSC 304	12" RW	220 - 300	Ø 420 x 2250	309 008 030	309 005 525 [Ø 420 mm x 400 mm]	309 005 647 (Set = 3 pcs.)	
	12" RW	350 - 100	Ø 420 x 2400	309 008 031			

* CT: encapsulated motors, RW: rewindable motors

** 316SS version: "N" added to model no.; 904L version: "R" added to model no. (available on request)

DIMENSIONS SUPPORT BRACKETS 10"



Support brackets model no.	Middle height	Support pump			Support flow sleeve / motor		
	Hm [mm]	B [mm]	Bm [mm]	Ø BF [mm]	B [mm]	Bm [mm]	Ø BF [mm]
309 005 644	250	380	430	15	450	500	15
309 005 645	250	380	430	15	450	500	15
309 005 646	270	390	440	15	500	550	15
309 005 647	300	400	450	15	550	600	15

CATALOG REVISIONS

Rev. no.	changes	page
01	update ratings 8" VSC 114/132/156	6
	update ratings 10" VSC204/264/304	8
02	adjustment of product description, deletion of Index	2
	adjustment of P_N [kW] for 8" REW motor	6
	update ratings 8" VS78 / motors 6" Rew from 18.5 - 22kW to 18.5 - 26kW	4
	update model numbers strainer for 8" pumps	4



Franklin Electric Europa GmbH
Rudolf-Diesel-Str. 20 - 54516 Wittlich
GERMANY
Phone: +49 (0) 6571 - 105-0
Fax: +49 (0) 6571 - 105-510
Email: info@franklin-electric.de

Franklin Electric S.r.l.
Via Asolo, 7 - 36031 Dueville (Vicenza)
ITALY
Phone: +39 0444 361114
Fax: +39 0444 365247
Email: sales.it@fele.com



1000010045 EN REV.02_05-2022



franklinwater.eu

Single member - Company subject to the control and coordination of Franklin Electric Co., Inc.
Franklin Electric reserves the right to amend specification without prior notice.